



# THOMAS HOUSE REDEVELOPMENT

TIMARU BOYS' HIGH SCHOOL





## TIMARU BOYS' HIGH SCHOOL HAS A PROUD HISTORY OF BOARDING.

Early in 1880 the school first provided boarding opportunities, with the first hostel 'the Rectory' built in 1907. In 1935 it was renamed Thomas House in honour of the then Rector with several of the later boarding houses carrying the names of previous students, staff and governors.

Thomas House remains a key factor in the spirit of today's school, with strong support from families, many of them who were Boarders themselves.

Thomas House is situated on the school grounds, amongst gardens and established trees, overlooking a large rectory sports field. The hostel remains an integral part of life at Timaru Boy's providing students with a supportive 'home away from home' enabling them to become valuable contributors in all aspects of school's life. Our boys enjoy academic, sporting, leadership and cultural success whilst respecting the traditions of the past and focusing on a positive future.





# THOMAS HOUSE REDEVELOPMENT PROJECT

## WHY IS REDEVELOPMENT REQUIRED

In recent years, there have been increased costs in refurbishing and maintaining the hostel buildings. The Board has recognised that this ongoing expensive maintenance is not an efficient use of funds, and ultimately some of the buildings will soon be beyond their life expectancy.

To this end, and to reduce the expensive ongoing maintenance of the older buildings – the Board has made the appropriate decision to redevelop. The updated buildings will be befitting of modern standards and requirements. Furthermore, they will also bring Thomas House into line with modern boarding offered by other reputable boys schools throughout New Zealand.

However, this is not a simple exercise. Thomas House remains Board owned and operated, and as such, does not qualify for any Ministry of Education funding, however, there still remains strict limitations and guidelines on a Boards ability to borrow funds.

The redevelopment of Thomas House is seen as an important factor in sustaining a strong healthy student roll. Ian Sawers, Rector from 1982-94 once wrote: “When Thomas House is strong, the school is strong”.



# THOMAS HOUSE REDEVELOPMENT PROJECT

## A REDEVELOPMENT THAT LOOKS TO THE FUTURE

A development committee has worked to produce new concept plans for a two-stage purpose built facility that would better meet the needs of all 125 students and support staff both now and in the future. The facility will be built in accordance with new building standards for School hostel accommodation.

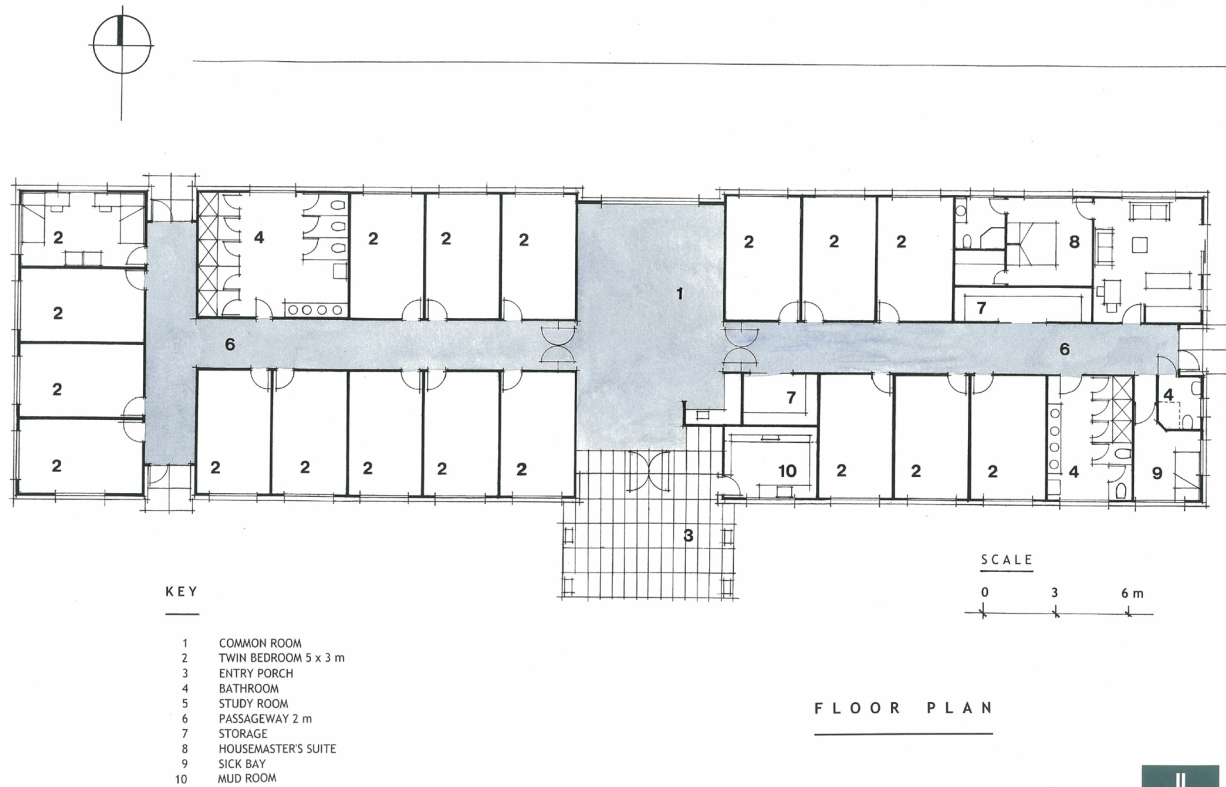
The overall development is a 60 bed modest build that consists of two separate single level buildings which will be built in 2-stages with an overall cost of \$3.2 million.

The completion of Stage One will enable the redevelopment to reach an exciting and important milestone.

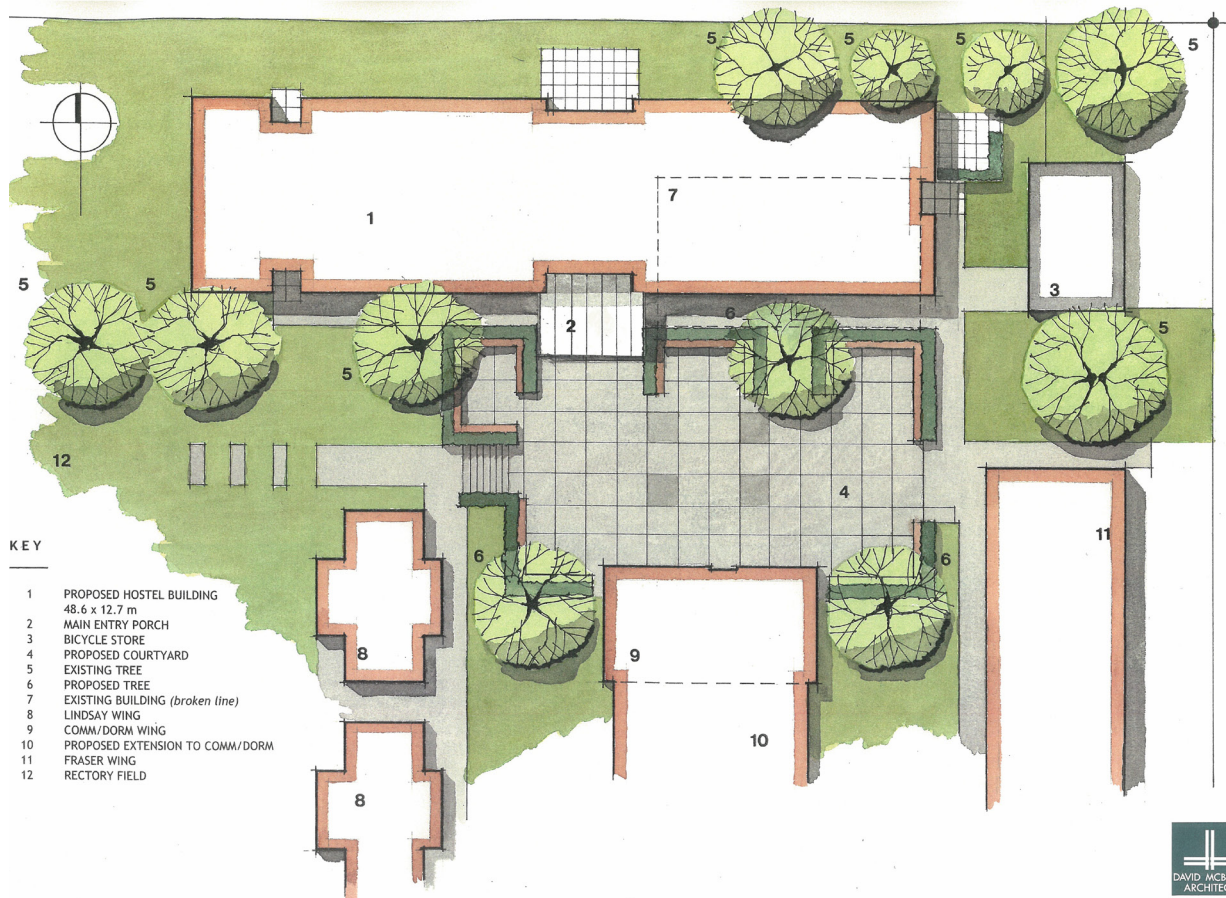
Initially, Stage One, will include 18 twin rooms (36 beds), storage/drying facilities, bathrooms, common room, housemaster accommodation and a sick bay. The exterior cladding of the new builds will predominantly have a brick exterior to ensure they are in keeping with existing buildings and have low ongoing maintenance costs. Estimates for Stage One have been received at a completed cost of \$1.8 million.

Development to Stage Two cannot begin until Stage One is fully funded.





FLOOR PLAN – THOMAS HOUSE REDEVELOPMENT PROJECT.



SITE LAYOUT – THOMAS HOUSE REDEVELOPMENT PROJECT.







Any support will be gratefully welcomed – ensuring that future generations enjoy Thomas House as much as previous boys and families have done.

## PROGRESS TO DATE

The Board has engaged David McBride as architect and Logic Group who as project managers and surveyors will finalise designs and manage the build itself, ensuring a high quality build within budget. Site inspections, service engineering and surveying have all been completed.

There has been a high level of interest from past and current families to see this build become a reality. Recent years have seen an annual voluntary donation for current boarding families to assist with this major cost. We have also been very fortunate to have received some generous donations from our wider community to kick start our redevelopment.

We now believe we are in a position to achieve our goal of a building start date in early 2018, and are now approaching our wider school community who may wish to financially support this project. We would be incredibly grateful for any support that we receive, recognising that this redevelopment will only become a reality through your support.

We have set \$800,000 as our fundraising target. Once this has been met, combining with our existing development funds will see Stage One fully complete and operational within the 2018 year.



# FUNDING OPTIONS

Please find below further information on the opportunities to contribute funds towards our development. We hope you will consider our request and we would also appreciate your feedback on any other ways you may like to assist.

**A Thomas House Development Donation is tax deductible for Inland Revenue purposes.**

## CASH DONATIONS

A cash donation can be made direct to Thomas House, via cheque or direct credit payable to Timaru Boys' High School Development Trust **Account Number 12-3209-0090725-00**

### CASH DONATION \$

Name \_\_\_\_\_

Contact Details    Address \_\_\_\_\_

Email \_\_\_\_\_

Phone \_\_\_\_\_

## ANNUAL PLEDGES

Some donors have chosen to spread their donations over a period of time. Every year Timaru Boys' High School invoices the donor for their annual pledge.

Timaru Boys' High School can also accept monthly, bi-monthly and quarterly direct debit donations. Donations to the Thomas House development can be claimed as a donation for tax purposes.

Receipts will be issued after 31 March 2018 for amounts paid to date for the year 1 April 2017- 31 March 2018, and then 31 March annually thereafter.

### **BANKING DETAILS**

Timaru Boys' High School Development Trust  
Account Number 12-3209-0090725-00

### SINGLE YEAR PAYMENT

Pledge \$ \_\_\_\_\_

(date)    /    / 2018 \_\_\_\_\_

### MULTIPLE YEAR PAYMENT

Pledge \$ \_\_\_\_\_

Beginning (date) \_\_\_\_\_

To be paid (years) \_\_\_\_\_

### PLEASE BILL ME

Monthly \_\_\_\_\_

Quarterly \_\_\_\_\_

Other \_\_\_\_\_

## LARGE DONATIONS

We are delighted to be able to offer naming opportunities. The boarding houses will have many rooms and facilities that could permanently acknowledge your generous donation. If you would like to discuss these opportunities please contact us directly.

We would like to acknowledge all of our donors - with their consent - by way of a donations board in the common room entrance.

If you would like to make a significant donation, please contact us so we can arrange a personal meeting with you.

**FOR ALL FURTHER ENQUIRIES PLEASE CONTACT** Colin Murdoch | Phone 0274 732 635 | Email [strathdon@tra.co.nz](mailto:strathdon@tra.co.nz)  
Nick McIvor | Phone 027 44 29 789 | Email [mcivorni@timaruboysschool.nz](mailto:mcivorni@timaruboysschool.nz)





PERSPECTIVE ILLUSTRATION - THOMAS HOUSE REDEVELOPMENT PROJECT. DAVID MCBRIDE ARCHITECT.

211 North Street, Timaru 7940 | Phone 03 687 7560 | Email [tbhs@timaruboysschool.nz](mailto:tbhs@timaruboysschool.nz)

[www.timaruboysschool.nz](http://www.timaruboysschool.nz)